



POINT MUGU SEA RANGE

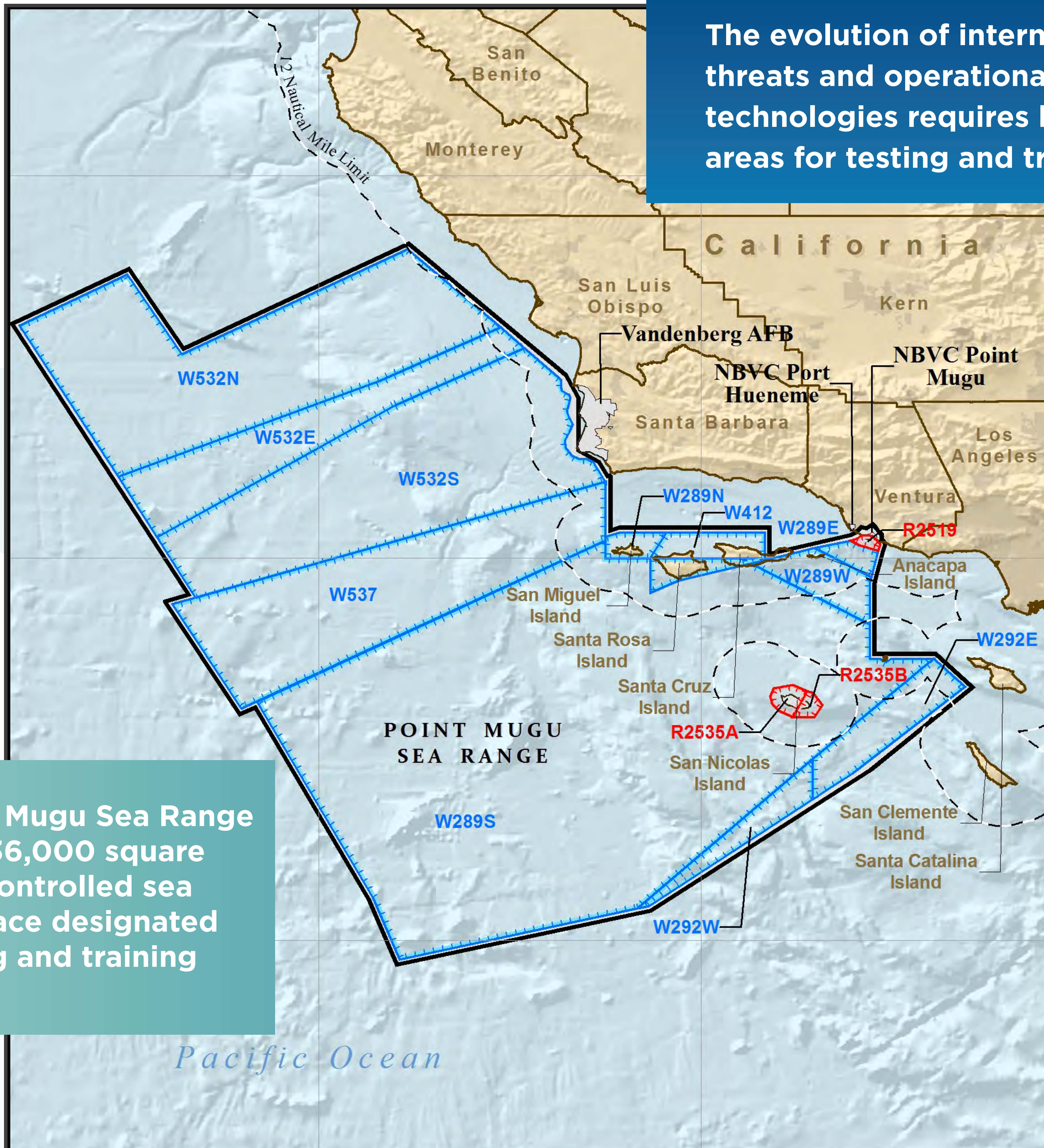
Environmental Impact Statement/ Overseas Environmental Impact Statement

Study Area

The Navy has conducted testing and training activities in the Study Area for decades.

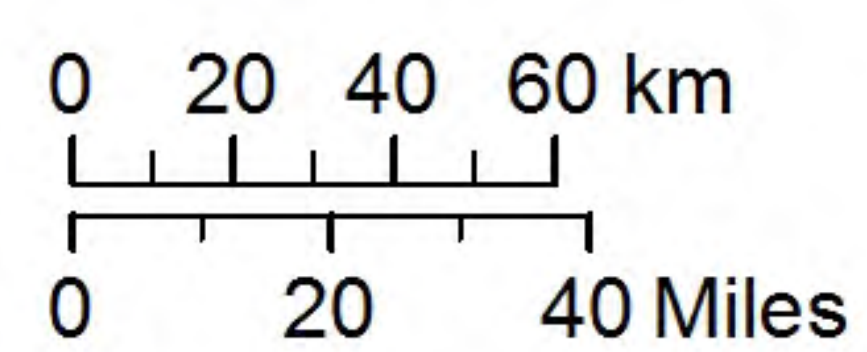
The evolution of international threats and operational technologies requires large areas for testing and training.

The Point Mugu Sea Range includes 36,000 square miles of controlled sea and airspace designated for testing and training activities.



Legend
-- 12 NM Limit
[Thick black line] Point Mugu Sea Range

Special Use Airspace
[Blue dashed line] Warning Area
[Red dashed line] Restricted Area



PMSR06191V06