

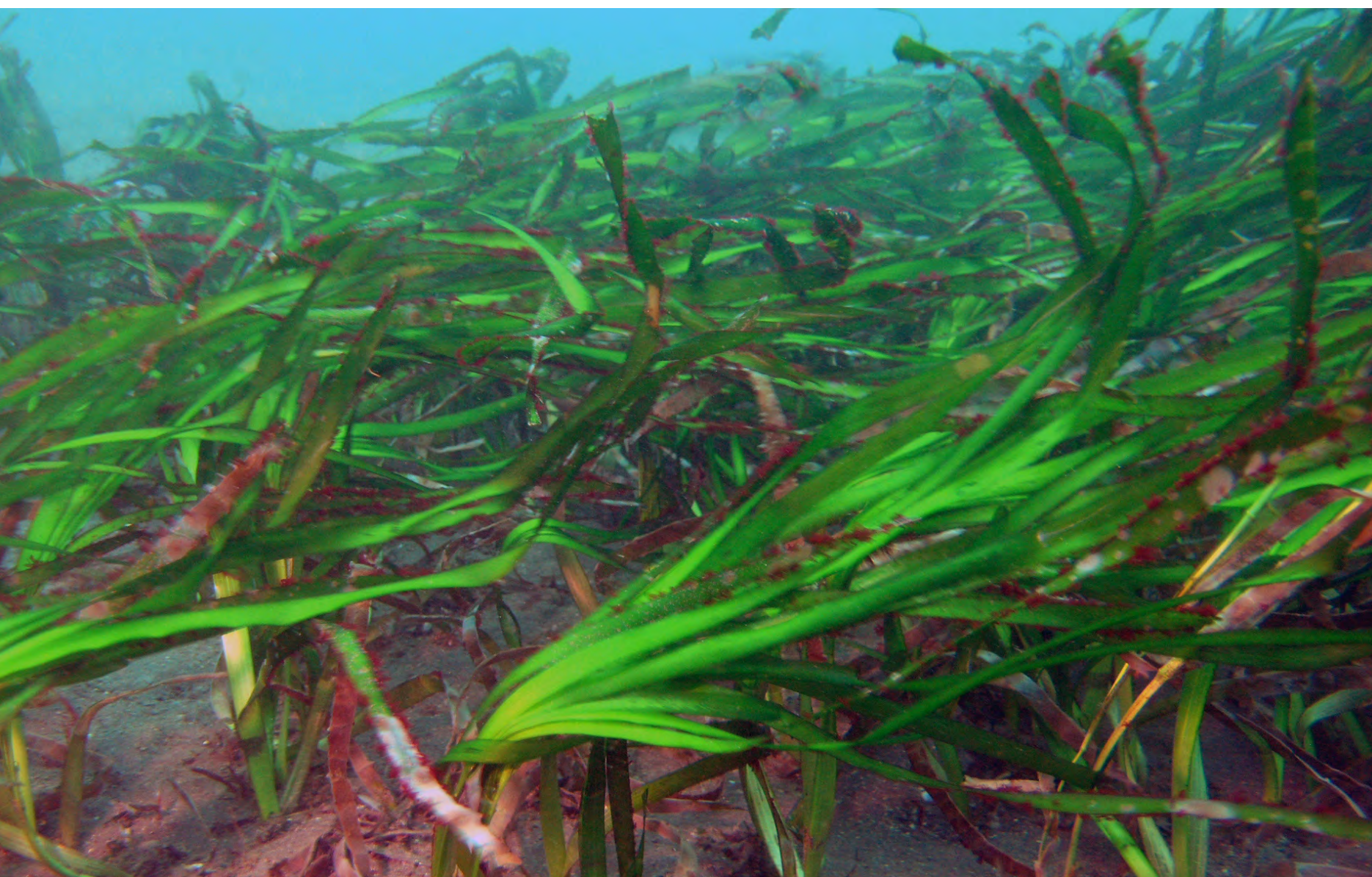


POINT MUGU SEA RANGE

Environmental Impact Statement/ Overseas Environmental Impact Statement



Biological Resources



SUMMARY OF FINDINGS

Marine vegetation: Could affect individual plants or parts of plants; however, detectable changes in growth, survival, propagation, or population-level impacts not expected.

Marine invertebrates: Could affect individuals, but not expected to impact survival, growth, recruitment, or reproduction of populations or subpopulations.

Marine fishes: May have temporary and infrequent impacts, but not expected to have overall long-term consequences on populations.

Marine mammals:

- May result in some short-term effects, such as behavioral responses or temporary hearing threshold shifts.
- A few animals may experience permanent threshold shifts based on acoustic modeling.
- No long-term consequences for species or stocks expected.

Sea turtles: May result in short-term effects on individuals; no long-term consequences on populations expected.

Marine birds: May affect certain species, but not expected to impact population levels or prey availability.

Marine habitats: Not expected to result in degradation or loss of habitat.



NAVY-WIDE AT-SEA MITIGATION MEASURES

- Establish mitigation zones.
- Post qualified Lookouts.
- Observe the area.
- Modify or cease actions.



The Navy is committed to being a good steward of the environment and strives to minimize impacts on the marine environment from at-sea testing and training activities.



SPECIES PROTECTIVE MEASURES

San Nicolas Island

- Close some areas year-round and during species' breeding season.
- Restrict location, altitude, and time-of-year of missile launches and aircraft overflights.
- Monitor species near operational sites and before and during missile launches.
- Avoid protected species whenever possible.
- Maintain native vegetation.

Naval Base Ventura County Point Mugu

- Restrict location and altitude of missile launches and aircraft flight paths.
- Restrict year-round beach access.
- Coordinate equipment placement.



Cumulative impacts: Marine mammals and sea turtles are the primary resources of concern. The Proposed Action is not anticipated to meaningfully contribute to population decline or affect stabilization and species recovery.

